

# How to Join This Team

Becoming a member of WCBC

202 Bank Street  
Ph. 438 3948

**'RAISING WORLD CHANGING CHRISTIANS'  
SERVING NORTHLAND CHURCHES'**

**Whangarei Central Baptist Church**



We are better together! Membership is not about joining a club. It's all about partnering with us to pursue God's vision for this team.

To Paul, being a **'member'** of the church meant being a vital organ of a living body. The same is true for you as a part of Christ's body.

When you join this church you join a team who believe that at Whangarei Central Baptist Church, together we can raise generations of world changers and bless the churches of the North.

When you were baptised you joined God's international family. Church membership is to make a commitment to serve on the local team.

To become a church member you need to have been biblically baptised (by immersion). Let one of the elders, Ministry Team Leaders or Pastors know if you would like to join the team. Two members will spend time getting to know you, and answer any queries about the church. Once the elders have met, your name will be put in the newsletter for two weeks prior to being accepted into membership.

## **Statement of Faith**

The Church is a community of those who believe in God the Father, in His Son Jesus Christ, and in God the Holy Spirit - one God; who are repentant of sin and who have been saved by personal faith in Jesus Christ through His atoning death and resurrection; who publicly confess their faith, and are committed to the Church's vision, aims and functions.

The Church believes in:

- The true humanity and deity of the Lord Jesus Christ.
- The atonement made on the Cross by our Lord for the sin of the world.
- The person of the Holy Spirit as the one who sanctifies and who sets apart, empowers, directs and imparts spiritual gifts to the church.
- The inspiration of the Bible and its authority in all matters of faith and practice.
- Salvation is by faith in Jesus Christ alone.
- Membership of the church is for those who have received salvation.
- The immersion of believers in water as the only scriptural form of baptism.

A full Church Constitution is available from the office on request.

## **Structure**

- The Church is governed through its members, and works closely with Regional and National Baptist Staff, the Baptist Churches of New Zealand and the wider body of Christ.
- Leadership consists of the Pastors, Elders and Ministry Team Leaders.
- The Church has set up several Charitable Trusts to provide resources which will enable the Church through the Trust to minister to its local community.
- You may like to view our Health & Safety video on our website under Teaching/Videos

# **Giving**

**2 Corinthians 9:7** *"Each of you must make up your own mind how much to give. But don't feel sorry that you must give and don't feel that you are forced to give. God loves people who love to give."*

Give to God what's right, not what's left! Decide on pay day what to give and put that aside. Many choose to give a tithe, 10% of what we receive after tax.

## **4 Ways to express your worship through giving at Whangarei Central Baptist Church**

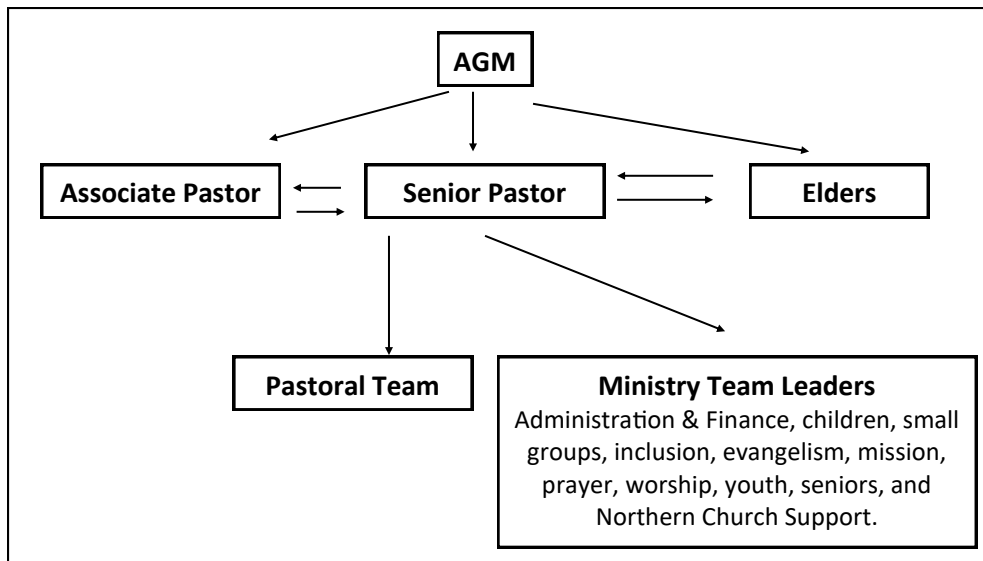
Contact the church office to receive a giving number.

1. Preferred option. Fill in an AP form (in foyer) "Honoring God with Our Resources." Tax receipt given, and 1/3rd is rebateable.
2. Write your number on a blank envelope (or we will provide envelopes), put it in the offering bag and it will be recorded and a tax receipt given.
3. Pay by eftpos and put your giving number on the back of the eftpos receipt, which is then placed in the box by the eftpos machine.
4. Money or cheques placed directly into the offering bag during services are not recorded.

# **Member's Pledge**

1. To share by life and word in the supreme task of the church, namely by witnessing to the saving power of Jesus Christ our Lord.
2. To do all in my power to deepen and enrich the spirit of fellowship in the church, always seeking to develop a spirit of love in this fellowship of Christ's people.
3. To support the vision of this church.
4. To live at all times such a life as reflects a true Christian and a member of the church.
5. To take an active and diligent part in the life and work of the church, regularly attending its services of worship as far as I am able, and being willing to help in whatever way I can.
6. To be faithful in prayer for the church and its witness in the community.
7. To share conscientiously in contributing to the funds of the church according to my means.
8. To support and encourage the leadership of the church and attend church members' meetings.

Most decisions are made by our Ministry Team Leaders and Elders. However, as members you decide who they will be and what their budget will be.



### Please fill in a “Spiritual Gift and Passion Questionnaire”.

This will help us support you in your ministry and indicate which ministry team you may like to serve in.

#### Important Phone Numbers:

<b>Pastor:</b>	<b>Russell Watts</b>	<b>027 766 9172</b>
<b>Associate Pastor:</b>	<b>Brigitte Crowe</b>	<b>021 054 0989</b>
<b>Pastoral carer:</b>	<b>Marion Patten</b>	<b>027 693 5045</b>
<b>Elders:</b>	<b>Ruth Butcher</b>	<b>09 436 5324</b>
	<b>Adrienne Coats</b>	<b>09 436 0337</b>
	<b>Steve Dunn</b>	<b>09 438 7477</b>
	<b>Joy Nielsen</b>	<b>09 437 2171</b>
	<b>Jan Payne</b>	<b>09 438 4786</b>
	<b>Selwyn McIlhinney</b>	<b>09 430 2166</b>
<b>Office:</b>	<b>9am - 3pm Monday - Friday</b> <b>Ph. 09 438 3948</b> <b>office@whangareicbc.org.nz</b> <b>www.whangareicbc.org.nz</b>	